

## Mouse Anti-Salmonid Immunoglobulin Horseradish Peroxidase Conjugated Monoclonal Antibody

Catalog #: IPA006H

Quantity: 100µg

Lot #: 30543C

### Applications

Suitable for immunoblotting (western or dot blot), ELISA, and Immunohistochemistry

### Formulation

Protein G purified, HRP0 conjugated, in PBS pH 7.2 with 10 mg/mL BSA as stabilizer and 0.01% (w/v) Gentamicin sulfate as preservative

### Species Cross Reactivity

#### *Salmo*

Atlantic Salmon	+
Brown Trout	+

#### *Onchorhynchus*

Chinook Salmon	+
Chum Salmon	+
Coho Salmon	+
Sockeye Salmon	+
Rainbow Trout	+

#### *Salvelinus*

Arctic Char	+
Brook Trout	+

### Negative Controls:

China Perch, Zebra Fish	-
-------------------------	---

### Background

This mouse monoclonal anti-salmonid immunoglobulin antibody recognizes a variety of heavy chain epitopes on several *Salmonid* species. As a result, this antibody represents a powerful tool for the indirect detection of clinically and economically important salmonid parasites; parasite-specific immunoglobulins from *Salmo*, *Onchorhynchus* and *Salvelinus* may react with our monoclonal anti-salmonid (H-chain) Ig antibodies. This antibody can be used to monitor levels of serum immunoglobulins in salmon stock, and responses to specific parasites, or to assess the efficacy of salmonid vaccines.

### Reconstitution

Restore with 100µL of deionized water.  
Centrifuge product if not completely clear after standing at room temperature

### Immunogen

Rainbow Trout and Atlantic Salmon heavy and light chain immunoglobulins

### Specificity

Oncorhynchus and Salvelinus serum immunoglobulins

### Stability

+4°C (stable for one year after reconstitution)

### Host/Isotype

IgG2a / mouse

### Clone

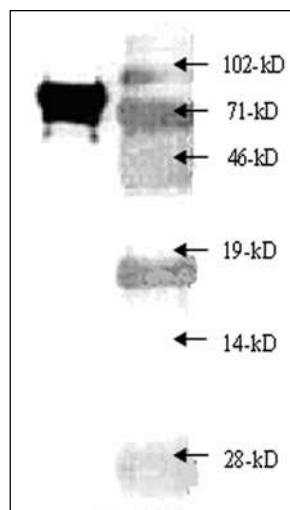
5F12

### Suggested Dilution

1/500 – 1/1000 (ELISA)  
1/400 – 1/800 (WB)

Optimal titers for applications should be determined by the researcher

### Sample Data



Western blot of Atlantic salmon immune serum showing a large H chain band at approximately 71-kD as detected by IPA006H antibody. Molecular weight markers are indicated on the right.

FOR IN VITRO RESEARCH PURPOSES ONLY. NOT INTENDED FOR USE IN HUMAN OR ANIMALS.

Caution: Contains Sodium Azide

To place your order, please contact us via:

T: (250)-483-0308 | F: (250) 483-0309 | E: [contact.ipa@immunoprecise.com](mailto:contact.ipa@immunoprecise.com) | W: <http://www.immunoprecise.com>