

Recombinant human C2

Catalog C001 - 0.1 mg
Lot 1987

Life Sciences Incubator
Yalelaan 62
3584 CM Utrecht
The Netherlands

Product description

Recombinant human complement protein C2 with an N-terminal his-tag. The cDNA of human complement component C2 (genbank NM_000063) was cloned, expressed in HEK293 and purified to homogeneity (figure 1). Each vial contains 200 µg C2 at a concentration of 0.4 mg/ml.

Complement Component C2 is a serum glycoprotein that functions as part of the classical pathway of the complement system. Activated C1 cleaves C2 into C2a and C2b. The serine proteinase C2a then combines with complement factor 4b to create the C3 or C5 convertase. Deficiency of C2 has been reported to be associated with certain autoimmune diseases. The gene localizes within the class III region of the MHC on the short arm of chromosome 6.

Sequence

marplctlllmatlagalagshhhhhhsapscpqnvnisggftlshg
wapgslltyscpqglyspasrlckssgqwtpgatrslskavckpvrca
pvsfengiytrpgsyvggnvsfecedgflrgspvrqcrpngmwdget
avcdngaghcnpngislgavrtgfrfghgdkvrrcssnlvtgsserecq
gngvwsgetpicrqpysydfpedvapalgtfsfhmlgatnptqktkesl
grkqiqrsgshlnlyllldcsqsvsendflifkesaslmvdriksfeinvsvaitf
asepkvlmsvlnndsrmdtevislenanykdhengtgtntyaalnsylv
mmnnqmrlgmetmawqeirhaiilltdgksnmggspktavdhireil
ninqkrndyldiyaigvgkldvdwrelnelgskkdgerhafilqdtkalhq
vfehmlvskltdticgvgnmsanasdqertpwhvtikpksqetcrkali
sdqvwltaaahcfrdgnhdslwrnvvgdpskswgkefliekavispgfdv
fakknqgilefygddiallklakvkmstharpiclpctmeanlalrrpqgs
tcrdhenellnkqsvpahfvalngsklnlnlkmgvewtscaevvsqekt
mfplntdrevvtdqflcsgtqedespckgesggavflerrfrffqvgvlsvw
glynpclgsadknsrkraprskvppprdfhinlfrmqpwlrlhlgdvlfnl
pl*

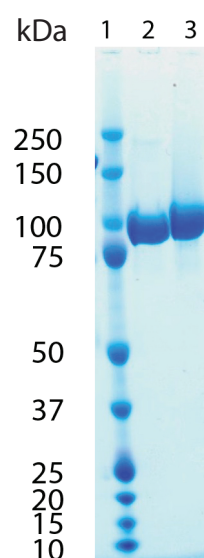


Figure 1. NuPage gel of purified recombinant C2. Lane 1, marker; 2, C2, non-reduced; 3, reduced

Storage, reconstitution and stability

Recombinant C2 should be stored at - 80 °C (stable for at least 1 year). The enzyme is stored in PBS containing 5 mM benzamidin HCl at 1 mg/ml. After thawing it should be stored in appropriate small aliquots at - 20 °C or - 80 °C (stable for at least 2 months).

PRODUCT USE LIMITATIONS, WARRANTY, DISCLAIMER

The product is not for use in humans

The product can only be used for internal research and development

The product can not be used in any commercial activity (commercial use includes, but is not limited to, 1) preparation of growth media with the purpose of sale, 2) R&D activities for third parties)

The product can not be resold.

Please contact bd@immunoprecise.com to inquire about further information.

ImmunoPrecise Antibodies products contain chemicals which may be harmful if misused. Due care should be exercised with all ImmunoPrecise Antibodies products to prevent direct human contact. All products are intended For Research Use Only and ARE NOT ALLOWED FOR USE IN HUMANS. Each ImmunoPrecise Antibodies product is shipped with documentation stating specifications and other technical information. ImmunoPrecise Antibodies products are warranted to meet or exceed the stated specifications. ImmunoPrecise Antibodies' sole obligation and the customer's sole remedy is limited to replacement of products free of charge in the event products fail to perform as warranted. ImmunoPrecise Antibodies makes no other warranty of any kind whatsoever, and SPECIFICALLY DISCLAIMS AND EXCLUDES ALL OTHER WARRANTIES OF ANY KIND OR NATURE WHATSOEVER, DIRECTLY OR INDIRECTLY, EXPRESS OR IMPLIED, INCLUDING, WITHOUT LIMITATION, AS TO THE SUITABILITY, PRODUCTIVITY, DURABILITY, FITNESS FOR A PARTICULAR PURPOSE OR USE, MERCHANTABILITY, CONDITION, OR ANY OTHER MATTER WITH RESPECT TO ImmunoPrecise Antibodies PRODUCTS. In no event shall ImmunoPrecise Antibodies be liable for claims for any other damages, whether direct, incidental, foreseeable, consequential, or special (including but not limited to loss of use, revenue or profit), whether based upon warranty, contract, tort (including negligence) or strict liability arising in connection with the sale or the failure of ImmunoPrecise Antibodies products to perform in accordance with the stated specifications.