

**Product Name**

Glutathione S-transferase protein  
(GST)

**CAT No.**

MQ 24.201-1mg

**LOT No.**

15211

**Quantity**

100 µg

Edition: October 7, 2015

**Intended use**

This product is for research use only. NOT for use in diagnostic or therapeutic procedures.

This product is tested for use in enzyme-linked immunosorbent assay (ELISA), SDS-PAGE and Western Blot (WB).

**Reagent provided**

The purified Glutathione S-transferase protein is supplied in PBS pH7.4.

**Precautions**

1. For professional users.
2. As with any product derived from biological sources, proper handling procedures should be used.
3. The product may be used in different techniques and in combination with different sample types and materials, therefore each individual laboratory should validate the applied test system.

**Storage instructions**

Store at -80°C. Repeated freeze/thaw cycles are not recommended.

**Dilution guidelines**

Since applications vary, you should determine the optimum working dilution of the product that is appropriate for your specific need.

**Relevance**

GST or glutathione S-transferase can be used as a fusion-tag attached to a protein of interest. The protein of interest attached to the GST protein has a strong binding affinity for GSH (Glutathione) and therefore can be easily purified.

Free GST can be used as a control sample or as a competitor with a GST-fused protein in different experiments.

 **ImmunoPrecise**  
products@immunoprecise.com  
www.immunoprecise.com

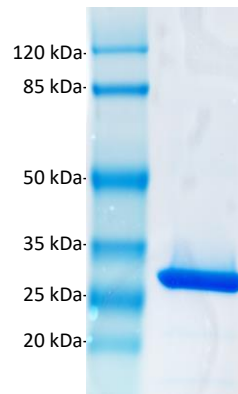


Figure 1: 5 µg of MQ24.201 (Mw≈25.5 kDa) was loaded on a SDS-PAGE to determine the purity of the protein solution.

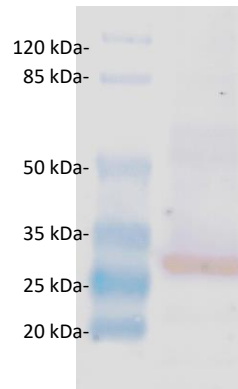


Figure 2: Immunoblot analysis on MQ24.101 (Mw≈25.5 kDa): Detection was done with anti-GST-HRP conjugate (VWR; RPN1236) 5000x diluted in PBS containing 0.05% tween-20 and 1% non fat dry milk.