

# *Ehrlichia ruminantium* 32kDa protein mouse monoclonal antibody (1E5H8)

Catalog PODI-0011

**ImmunoPrecise**  
products@immunoprecise.com  
www.immunoprecise.com

Specification sheet PS-PAb0011

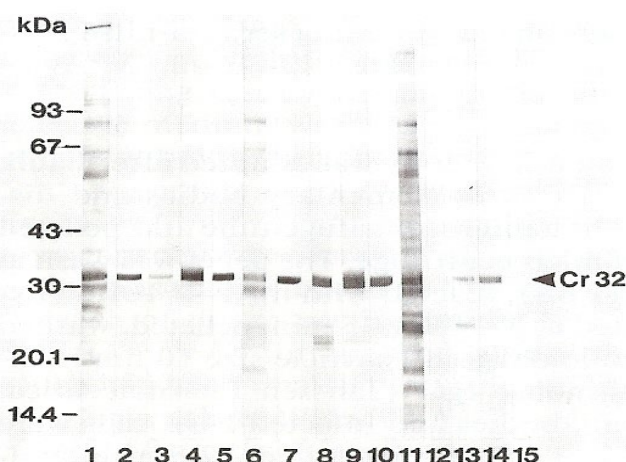
## Product description

Heartwater, caused by the intracellular bacterium *Ehrlichia ruminantium* (formerly *Cowdria ruminantium*), is an infectious rickettsial disease of domestic and wild ruminants, spread by ticks. Affected animals include cattle, sheep, goats, antelope and buffalo. The disease's name is derived from the fact that fluid collects around the heart or in the lungs of infected animals.

Product type: Primary antibodies  
Clone number: 1E5H8  
Immunogen: *Ehrlichia ruminantium* (formerly *Cowdria ruminantium*)  
Reacts with: MAP-1 protein of several *E. ruminantium* species  
Tested applications: Western blot, ELISA  
Purity: Protein G affinity purified, >95%  
Isotype: IgG1  
Light chain type: Kappa  
Storage buffer: TBS (Tris buffered saline)  
Form: Liquid  
Concentration: 0.5 mg/ml

## Storage and stability Data

Store at 4 °C, short term (1-2 weeks). For long-term storage, aliquot and keep at or below -20° C. Avoid repeated freeze-thaw cycles



Western blot of extracts of umbilical endothelial cell cultures (BU E) infected with three stocks of *C. ruminantium* probed with MAb. Lanes 1 to 5 contain antigen of Cowdria (Senegal).

Lane 1; positive anti-Cowdria (Senegal) goat serum, Lane 2; Mab IE3H10, Lane 3; 1E5H8, Lane 4; Mab 4F10B4, Lane 5; Mab 3D8H1. Lanes 6 to 10 contain antigen of the Cowdria strain Welgevonden. Lane 6; positive anti-Cowdria (Welgevonden) goat serum, Lane 7; Mab IE3H10, Lane 8; Mab 1E5H8, Lane 9; Mab 4F10B4, Lane 10; Mab 3D8H1. Lanes 11 to 15 contain

Cowdria (Um Banein stock) antigen. Lane 11; positive anti-Cowdria (Um Banein) goat serum, Lane 12; Mab IE3HI0, Lane 13; Mab IE5H8, Lane 14; Mab 4F10B4, Lane 15; Mab 3D8H1. Molecular mass markers in kDa are indicated on the left.

## Reference

R Jongejan F, Thielemans MJ, De Groot M, van Kooten PJ, van der Zeijst BA.

Department of Tropical Veterinary Medicine and Protozoology, Faculty of Veterinary Medicine, Utrecht, Netherlands

Competitive enzyme-linked immunosorbent assay for heartwater using monoclonal antibodies to a Cowdria ruminantium-specific 32-kilodalton protein. Vet Microbiology. 1991 Jul;28(2):199-211.

## PRODUCT USE LIMITATIONS, WARRANTY, DISCLAIMER

ImmunoPrecise Antibodies Europe BV products contain chemicals which may be harmful if misused. Due care should be exercised with all ImmunoPrecise Antibodies Europe BV products to prevent direct human contact. All products are intended For Research Use Only and ARE NOT ALLOWED FOR USE IN HUMANS. Each ImmunoPrecise Antibodies Europe BV product is shipped with documentation stating specifications and other technical information. ImmunoPrecise Antibodies Europe BV products are warranted to meet or exceed the stated specifications. ImmunoPrecise Antibodies Europe BV's sole obligation and the customer's sole remedy is limited to replacement of products free of charge in the event products fail to perform as warranted. ImmunoPrecise Antibodies Europe BV makes no other warranty of any kind whatsoever, and SPECIFICALLY DISCLAIMS AND EXCLUDES ALL OTHER WARRANTIES OF ANY KIND OR NATURE WHATSOEVER, DIRECTLY OR INDIRECTLY, EXPRESS OR IMPLIED, INCLUDING, WITHOUT LIMITATION, AS TO THE SUITABILITY, PRODUCTIVITY, DURABILITY, FITNESS FOR A PARTICULAR PURPOSE OR USE, MERCHANTABILITY, CONDITION, OR ANY OTHER MATTER WITH RESPECT TO ImmunoPrecise Antibodies Europe BV PRODUCTS. In no event shall ImmunoPrecise Antibodies Europe BV be liable for claims for any other damages, whether direct, incidental, foreseeable, consequential, or special (including but not limited to loss of use, revenue or profit), whether based upon warranty, contract, tort (including negligence) or strict liability arising in connection with the sale or the failure of ImmunoPrecise Antibodies Europe BV products to perform in accordance with the stated specifications.